

MetaTrader Australian VPS Guide



This guide is intended to assist you in quickly getting your trading server setup and ready to use. Please read below for specific instructions on how to access, configure and use your VPS to get the most out of your Forex trading experience.

Contents

1. Signup	2
2. Getting Started	3
2. Using MetaTrader	7
2.1 Installing Expert Advisors	7
2.2 Transferring Data to Your Meta VPS	7
2.3 Important Note.....	10
3. Support & Security	11

1. Signup

Choose the desired package from <http://www.metatrader.com.au/metatrader-hosting/> and click "Sign-Up"

Choose From 3 MetaTrader VPS Hosting Plans

	Meta VPS ⁵¹²	Meta VPS ¹⁰²⁴	Meta VPS ²⁰⁴⁸
RAM	512MB	1024MB	2048MB
RAID-10 Storage	50GB	100GB	200GB
Bandwidth	20GB	40GB	80GB
Sydney, Australia Datacentre	✓	✓	✓
24/7 Unsurpassed Support (Email)	✓	✓	✓
99.9% Uptime Guarantee	✓	✓	✓
Windows Server 2003 or 2008	✓	✓	✓
MetaTrader Ready	✓	✓	✓
Monthly Price (AUD) Inc. GST	\$55	\$98	\$196
Setup Fee (AUD) Inc. GST	FREE	FREE	FREE
	» Sign-Up	» Sign-Up	» Sign-Up

MetaTrader Hosting VPS 512 - Suitable for 1-4 MetaTrader platforms*

MetaTrader Hosting VPS 1024 - Suitable for 6-8 MetaTrader platforms*

MetaTrader Hosting VPS 2048 - Suitable for 12-16 MetaTrader platforms**

**Based on one EA per platform using 128MB RAM. Depending on your EA, you could run more or less instances of the MetaTrader platform than indicated above.*

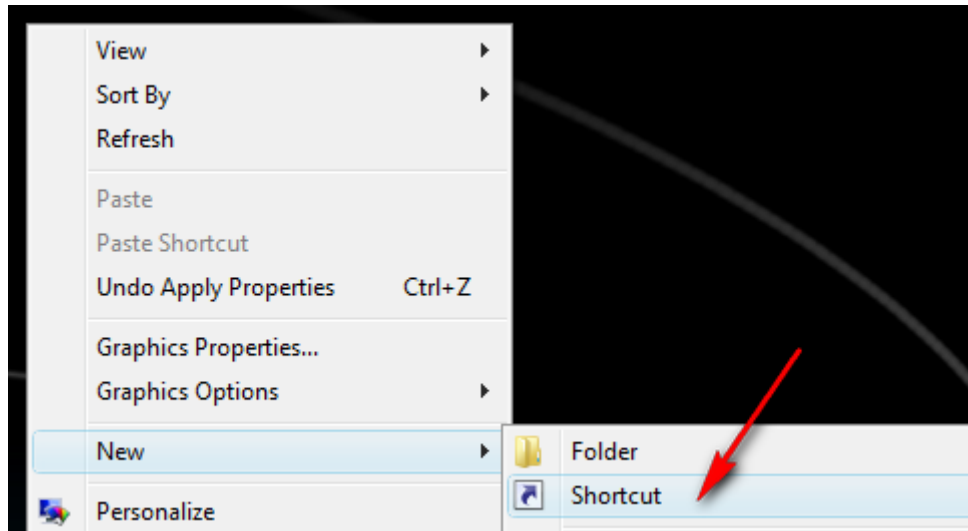
You will be then directed to the below form, please follow the prompts and enter the required details. Your VPS will take up to 2 working days to setup.

Configure Server

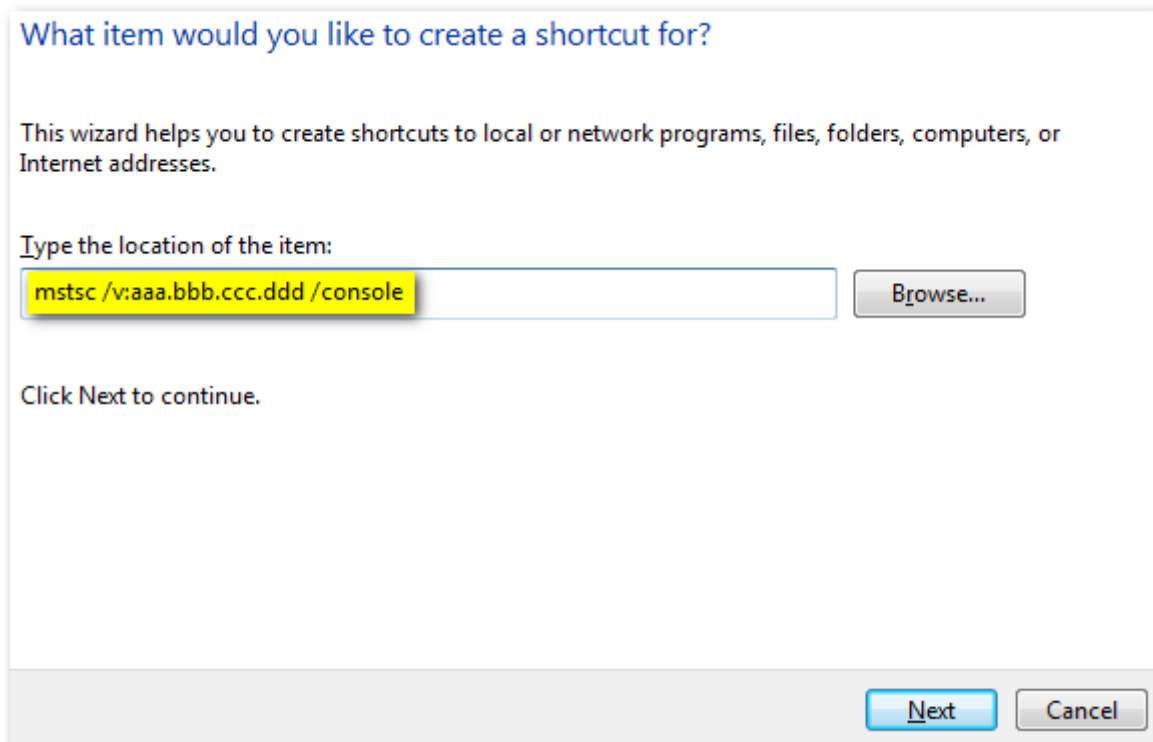
Hostname	<input type="text"/>	eg. server1(.yourdomain.com) enter any unique name
NS1 Prefix	<input type="text"/>	eg. ns1(.yourdomain.com) enter n/a
NS2 Prefix	<input type="text"/>	eg. ns2(.yourdomain.com) enter n/a
Root Password	<input type="text"/>	enter a password

2. Getting Started

In your welcome / VPS information email you will have received an IP address (aaa.bbb.ccc.ddd) that you will use to remotely access your VPS. You will use a Remote Desktop Connection utility in order to access your VPS's remote desktop interface. Windows XP and Vista has this built in as part of Windows and Remote Desktop clients are also freely available for Linux and MacOSX. The first thing you will need to do is configure a console remote desktop shortcut on your personal computer. First you need to right-click anywhere that is clear on your computer desktop and select New -> Shortcut as shown below:



The next step is to direct the new shortcut you've created to the console port of your VPS. The console port is CRITICAL as this is the port you must connect to in order to ensure your trading applications run a single instance 24/7/365.



In the "Type the location of the item:" field, enter " mstsc /v:aaa.bbb.ccc.ddd /console " (where aaa.bbb.ccc.ddd is

your VPS's IP address).

Then click next where you can name this new shortcut anything you like such as "MyVPS", etc. Finally click Finish to complete your new shortcut!

You are now ready to connect to your new VPS. Simply double-click the new shortcut you just created:



Once you double click the shortcut, you will be prompted for you login information for your VPS. You will have received this in your welcome email. Locate the following information and have it ready to enter in the screen shown below.

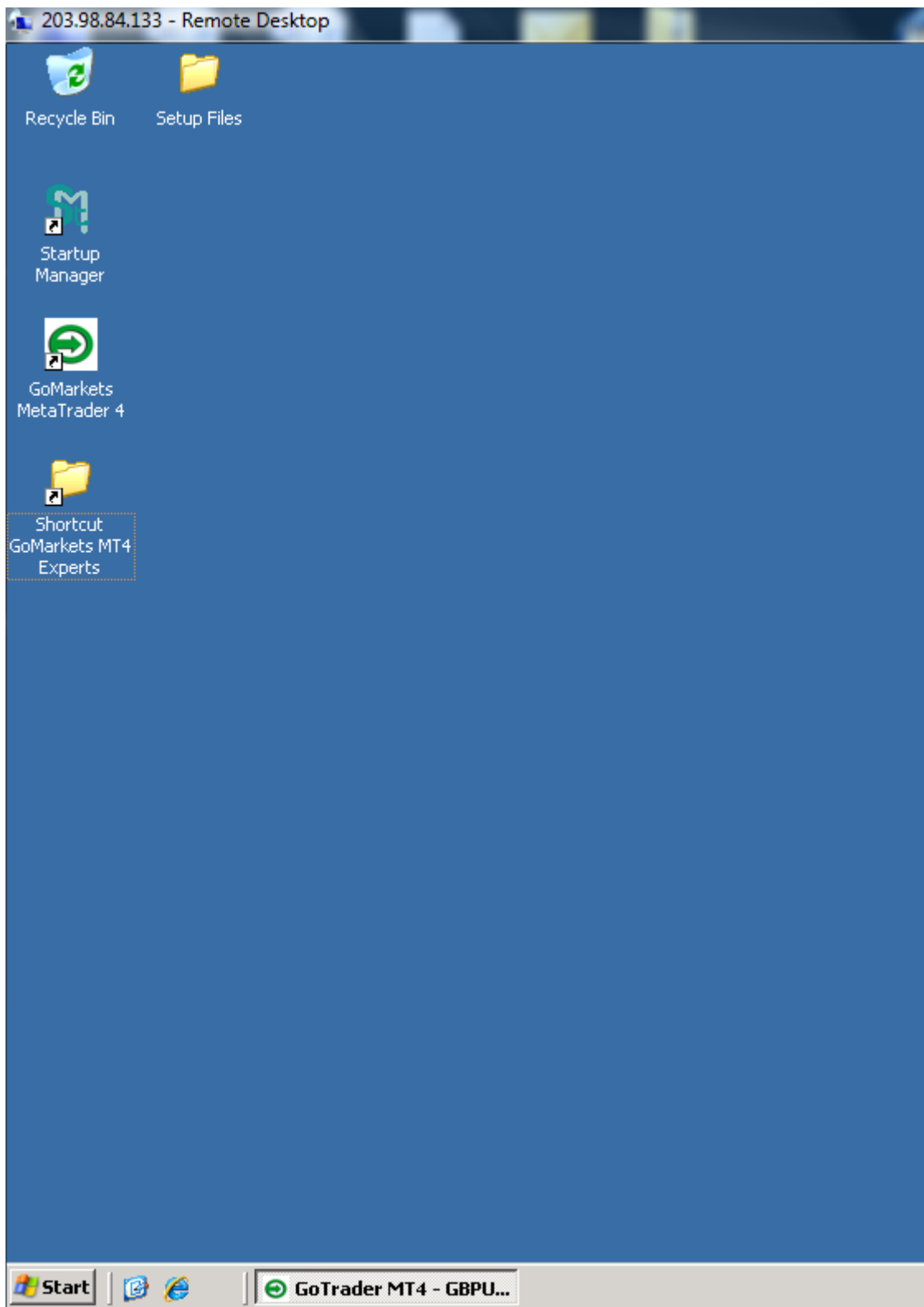
Username: Administrator

Password: Password in your welcome email



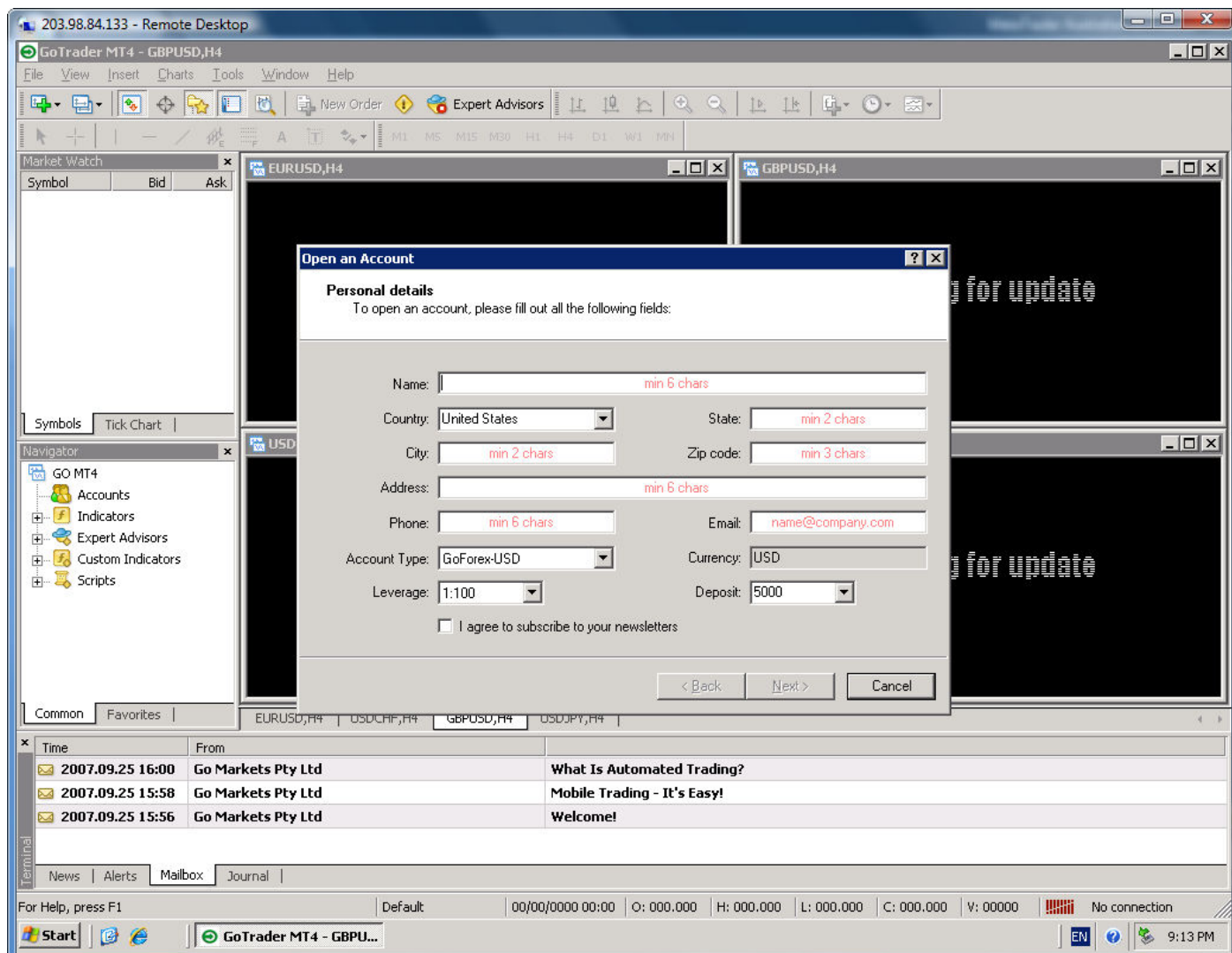
Click **OK** to continue. You will then see a Connecting box.

Once the remote desktop client connects, it will use the credentials you previously entered to login to your new VPS. You will see your remote desktop as below:

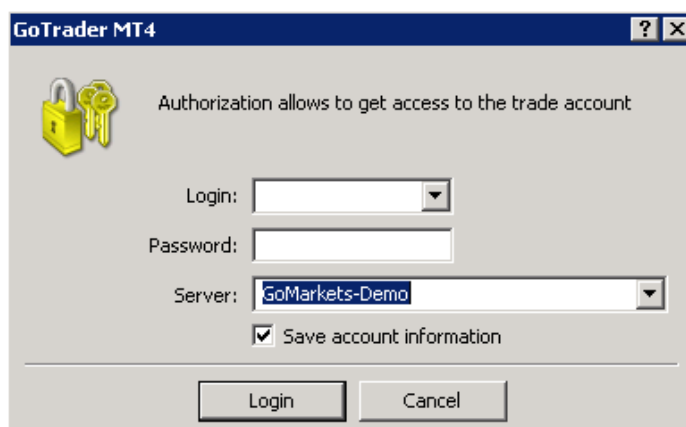


You can see that your VPS desktop is identical to an actual pc or server's desktop. From here you can click the start button, interact with the desktop, copy/paste your applications to the desktop, etc in order to begin using your VPS.

Select the **GoMarkets MetaTrader** shortcut to start MetaTrader if the program is not already running. The program on the first boot will show the below screen. If you would like to create a demo account, enter your details then press **Next**. If you would like to go straight to live trading, press **Cancel**.



You will next need to enter your login details received in your welcome email including the server address (even if its listed)



2. Using MetaTrader

2.1 Installing Expert Advisors

To automate MetaTrader 4, place your expert advisor EA file (usually a file ending in .EX4) in the "experts" folder while MetaTrader is not running. The experts folder of your MT4 installation is usually: C:\Program Files\GoTrader 4\experts

Start MT4. You will notice the new EA in the navigator window on the left under "Expert Advisors". Drag and drop the icon of the EA to the chart you want to run it on. This will result in a pop-up box that will allow you to enter any external variables that may be needed on the "inputs" tab. Make sure you click on "Allow live trading" under the 'common' tab of that box so the EA will work.

Click OK. If you did everything right you will see a tiny smiling face at the top right hand corner of the chart with the name of the Expert Advisor program that you are running next to it. That's it! Your automated trading system is now up and running.

NOTE: If the little face is not smiling, (if it has a frown) it means you did not check the "allow live trading" check box when you attached it. To fix this simply left click anywhere on the chart, and select "expert advisors" from the drop down menu and then "properties" to get to the current EAs properties. Once there, on the common tab, click to allow live trading and click OK.

2.2 Transferring Data to Your Meta VPS

If you need to transfer any data such as your expert advisor EA file we suggest one of the following methods.

Email - If you use an email account from either your Internet Service Provider or a free account such as Gmail or Yahoo mail you can email yourself the file then to download it simply access your webmail/email through your Meta VPS and proceed to download it.

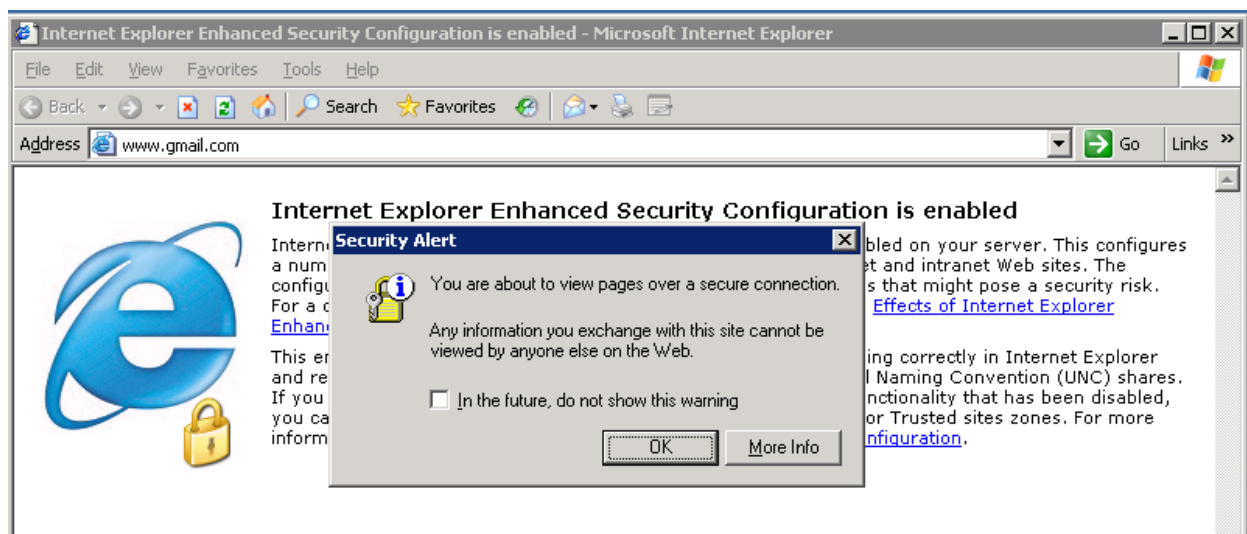
File Transfer Site – There are a number of free file transfer sites available that allow you to upload data and download it at another location or time. You simply select the files to upload then access the website once again through your Meta VPS and download the files. Two well known sites are RapidShare.com and MegaUpload.com.

In both cases you will be required to use Internet Explorer or another Web Browser such as Firefox to browse the web. Windows Server 2003 has stricter security when browsing so each time you wish to visit a new webpage using Internet Explorer you will be required to add each website to the 'Trusted Zone' before viewing the site.

How to access websites – Start by opening Internet explorer which is located on the task bar and represented by the blue 'e' icon. The pop up below will appear, tick the box 'In the future, do not show this message' then click OK.



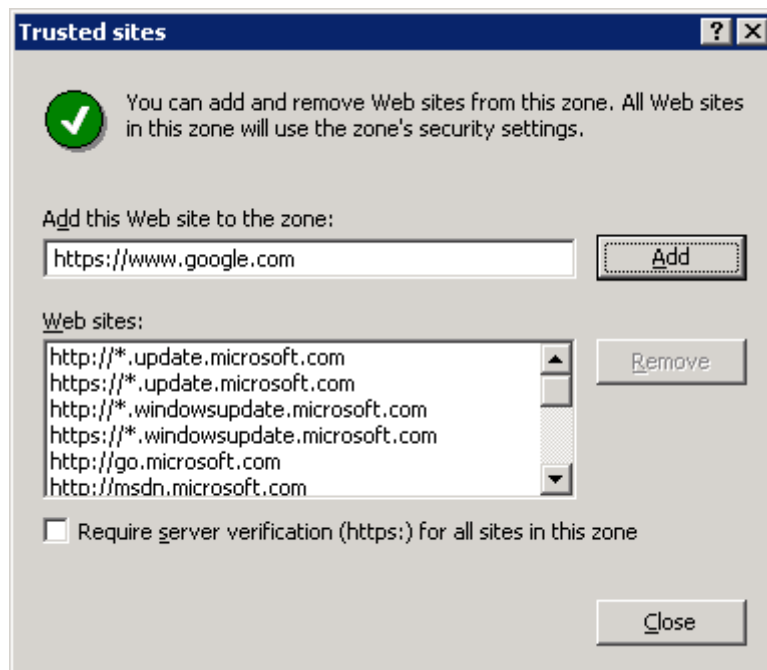
Type the address that you would like to visit in the Address bar, in this case we have chosen www.gmail.com, a new security alert pop up will appear, once again tick the box 'In Future do not show this message' then click OK.



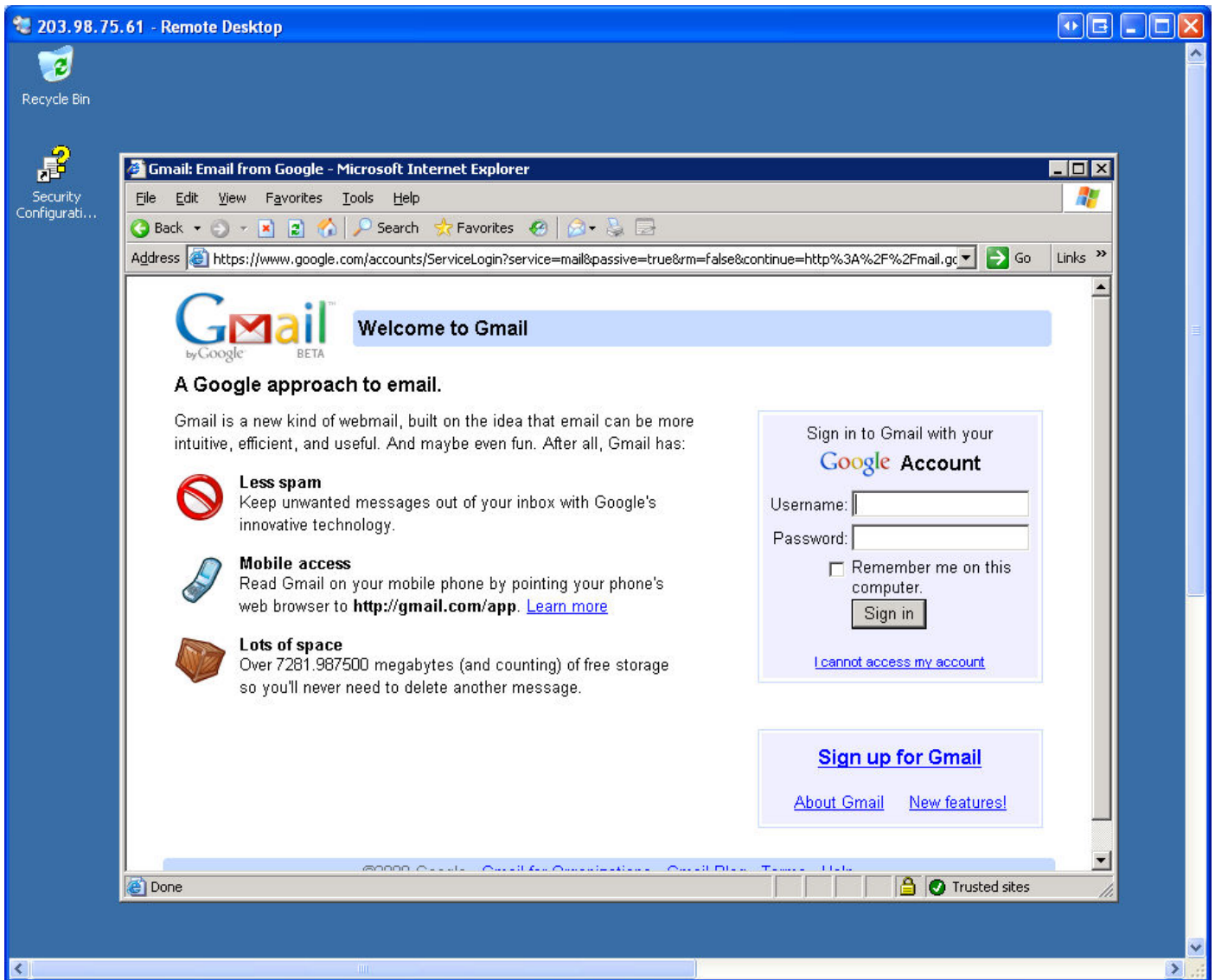
A new pop up will appear shown below, click the 'Add...' button.



The next pop up asks if Windows should add the site to the "Trusted Zone", click the 'Add...' button once again then click the 'Close'.



You will now be taken to the webpage that you requested.



2.3 Important Note

One final important note is that in order to properly disconnect and NOT log off your administrator session (as logging off would terminate your metatrader instance), you need to be sure and properly disconnect from any and ALL remote desktop sessions. The proper procedure is to choose Start -> Shut Down -> Disconnect from the Start menu -OR- to simply click the "X" in the top right corner of your remote desktop session. Either way will properly ensure that your applications will stay running, after you disconnect your session. You can then connect (to the console session as instructed above of course) to your VPS again at anytime to view your already-running applications and continue to manage/use your VPS.

3. Support & Security

Security – When provided to you the MetaVPS has the latest updates from Microsoft, to ensure that your MetaVPS stays up to date and secure it is recommended that you do the following.

Passwords – Choose a strong password, it is recommended that your password is **not a name** and be at least 8 characters long and includes letters (upper and lower case), numbers and symbols. A good example of a strong password is - **J8k\$CQ#afg**. You can update your password by doing the following:

Click on *Start > right click on My Computer > click on Manage*.

A new window with a directory will open.

Click on *Local users and groups > user > right click on Administrator and click Set Password*.

Automatic Updates – Windows has a feature named Automatic Updates that allows you to download updates for Windows, it is recommended that you use this feature to ensure that your MetaVPS has the latest patches and updates. You can set configure automatic updates by doing the following:

Click on *Start > control Panel > Automatic Updates*

Choose either *Automatic (recommended)* or *Download updates for me, but let me choose when to install them*.

Checking your RAM usage – To check your RAM usage press Ctrl+Alt+Delete, click on the *Performance* tab and view the available *Physical Memory (K)*

Sales - Sales support is available by email sales@crucial.com.au or by calling 1300 884 839 (+61 2 8257 3390) between the hours of 9AM-5PM AEST Monday-Friday.

Standard Support – Basic Technical support is available 24/7/365 via our Support Ticket Desk (response time less than 30 minutes). To contact the friendly support team at Crucial Paradigm please submit a ticket via the Support Desk <https://www.crucialp.com/support/>. Additionally you can contact them on 1300 884 839 (+61 2 8257 3390) between the hours of 9AM-5PM AEST Monday-Friday.

Standard Support covers:

- Physical Hardware issues
- Problems accessing the VPS via Remote Desktop
- Reinstall of Windows on the VPS

Please note Standard Support does **NOT** cover:

- Software related matters with 3rd party software installed on the VPS
- Configuration and setup of Windows and or Microsoft based applications such as Internet Explorer.
- Assistance with transferring data to the Meta VPS

Extended Support – You can purchase the Extended Support option for only \$50/month.

Extended Support covers:

- Configuration and setup of Windows and or Microsoft based applications such as Internet Explorer.
- Assistance with transferring data to the Meta VPS

Important Note - It is the customers responsibility to maintain and configure the software on the Meta VPS.